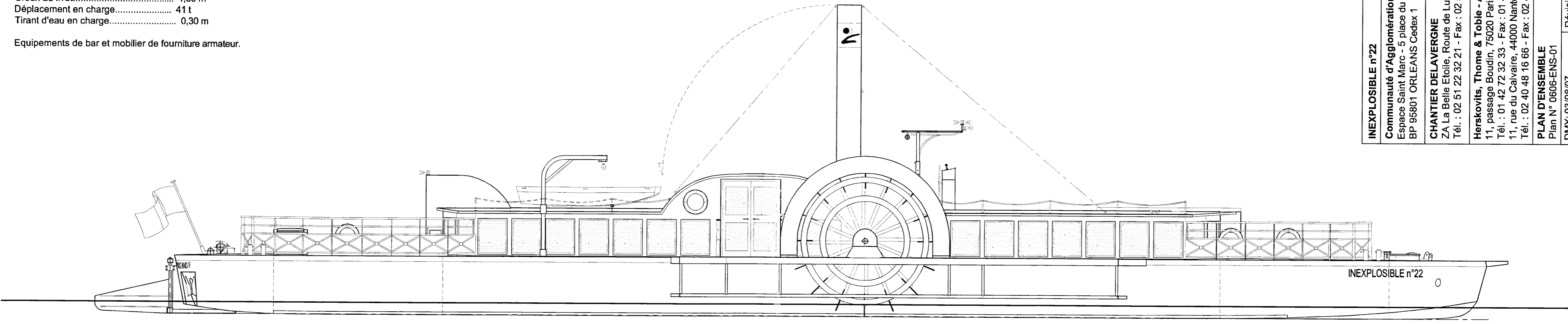


**CARACTERISTIQUES PRINCIPALES**

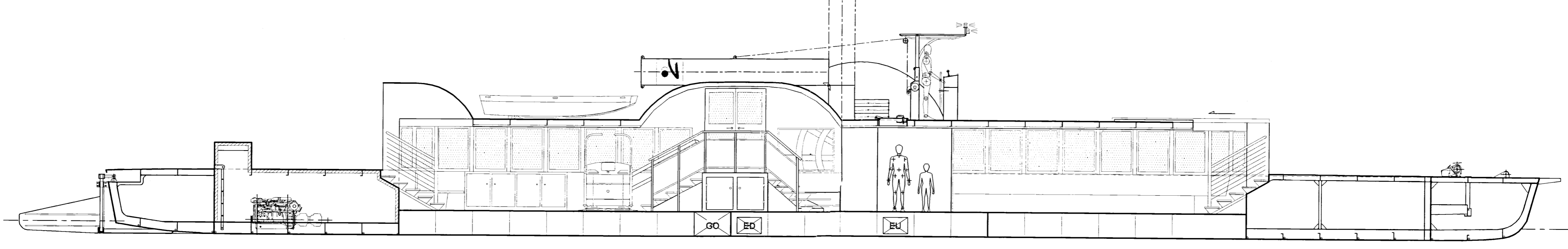
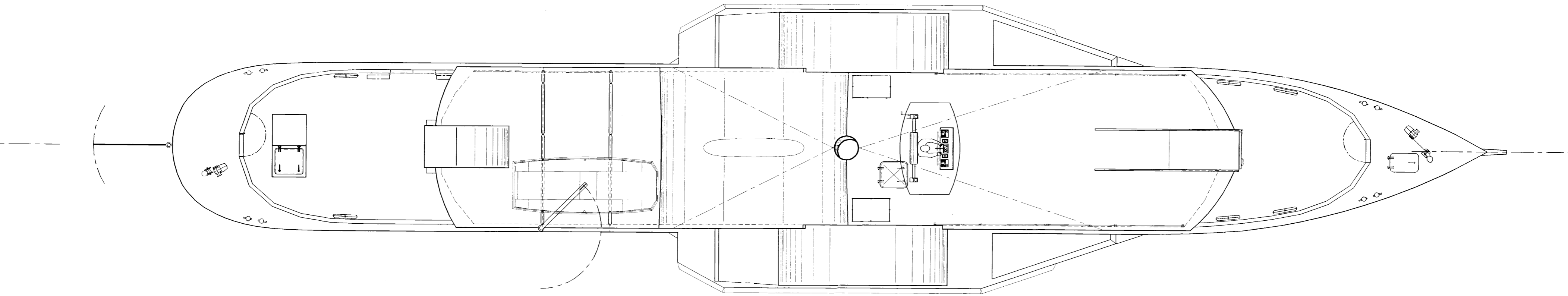
Longueur de coque..... 35,00 m  
 Longueur à la flottaison..... 34,20 m  
 Largeur coque..... 4,50 m  
 Largeur hors tout..... 7,50 m  
 Creux au livel..... 1,60 m  
 Déplacement en charge..... 41 t  
 Tirant d'eau en charge..... 0,30 m

Equipements de bar et mobilier de fourniture armateur.

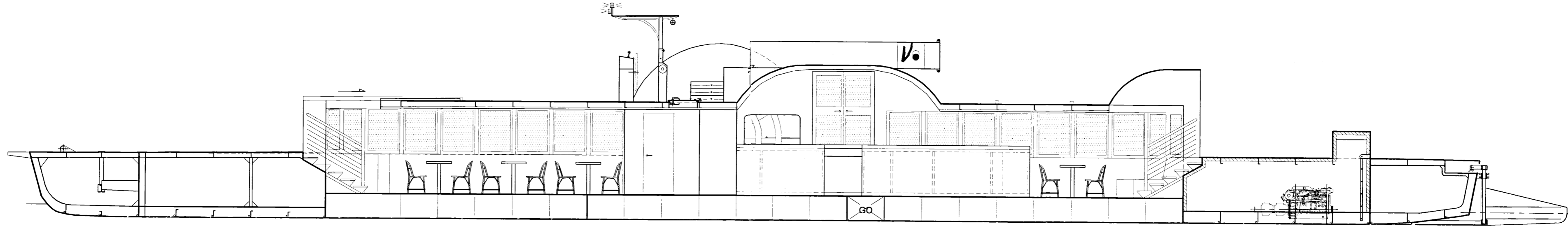
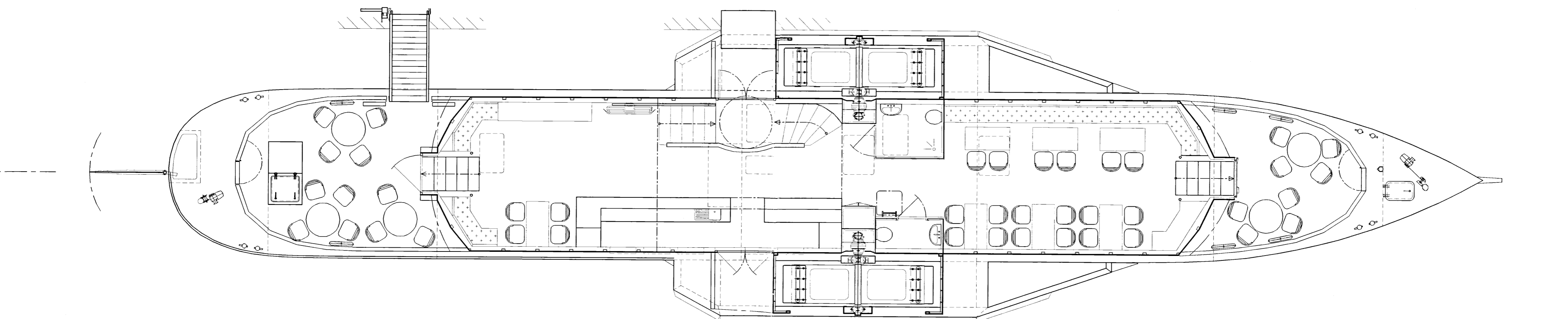
INEXPLOSIBLE n°22  
 Communauté d'Agglomération Orléans Val de Loire  
 Espace Saint Marc - 5 place du 6 juin 1944  
 BP 95801 ORLEANS Cedex 1  
**CHANTIER DELAVERGNE**  
 ZA La Belle Etoile, Route de Luçon, 85400 Avrillé  
 Tél. : 02 51 22 32 21 - Fax : 02 51 22 32 99  
 Herskovits, Thome & Tobie - Architecture Navale  
 11, passage Boudin, 75020 Paris  
 Tél. : 01 42 72 32 33 - Fax : 01 42 72 32 22  
 11, rue du Calvaire, 44000 Nantes  
 Tél. : 02 40 48 16 66 - Fax : 02 40 48 04 81  
**PLAN D'ENSEMBLE**  
 Plan N° 0606-ENS-01  
 DMY: 03/08/07  
 Echelle 1:75  
 Format A1  
 Révision G



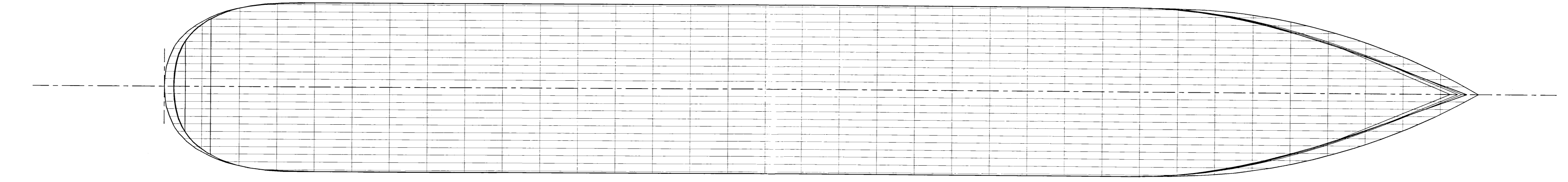
C0 C0.85 C1.75 C2.65 C3.55 C4.45 C5.35 C6.25 C7.15 C8.05 C8.95 C9.85 C10.75 C11.65 C12.55 C13.45 C14.35 C15.25 C16.15 C17.05 C17.95 C18.85 C19.75 C20.65 C21.55 C22.45 C23.35 C24.25 C25.15 C26.05 C26.95 C27.85 C28.75 C29.65 C30.55 C31.45 C32.35 C33.25 C34.15 C35



C0 C0.85 C1.75 C2.65 C3.55 C4.45 C5.35 C6.25 C7.15 C8.05 C8.95 C9.85 C10.75 C11.65 C12.55 C13.45 C14.35 C15.25 C16.15 C17.05 C17.95 C18.85 C19.75 C20.65 C21.55 C22.45 C23.35 C24.25 C25.15 C26.05 C26.95 C27.85 C28.75 C29.65 C30.55 C31.45 C32.35 C33.25 C34.15 C35



C35 C34.15 C33.25 C32.35 C31.45 C30.55 C29.65 C28.75 C27.85 C26.95 C26.05 C25.15 C24.25 C23.35 C22.45 C21.55 C20.65 C19.75 C18.85 C17.95 C17.05 C16.15 C15.25 C14.35 C13.45 C12.55 C11.65 C10.75 C9.85 C8.95 C8.05 C7.15 C6.25 C5.35 C4.45 C3.55 C2.65 C1.75 C0.85 C0



0 1 2 3 4 5 6 7 8 9 10 11 12 13 14 15 16 17 18 19 20 21 22 23 24 25 26 27 28 29 30 31 32 33 34 35